

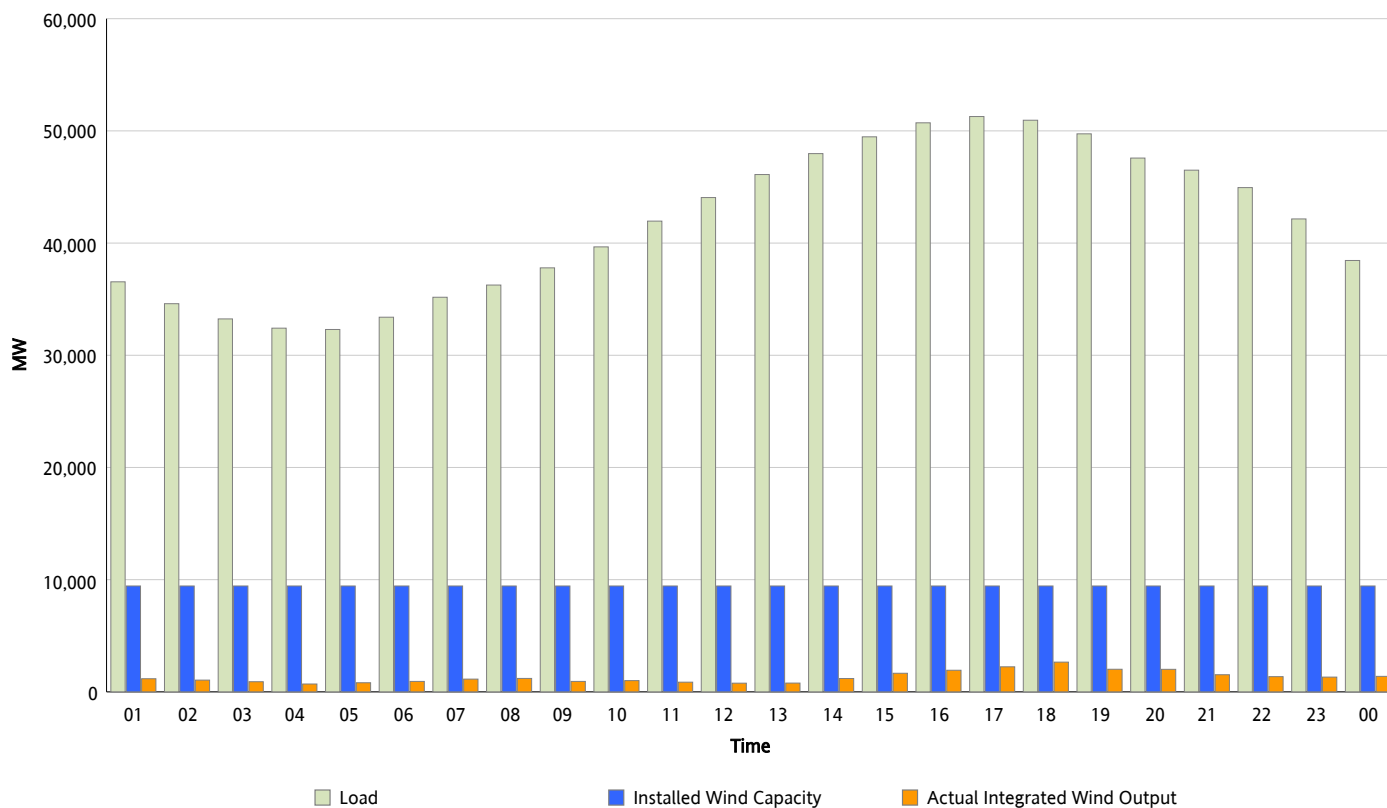


## ERCOT Grid Operations

### Wind Integration Report : 07/10/2012

Peak Load	51,281 MW
Load Peak Hour (HE)	17
Wind Over Peak	2,232 MW
Wind Record 06/19/12	8,368 MW
Max Wind Value*	3,027 MW
Wind Peak Time	17:08
Wind Integration %	5.94 %

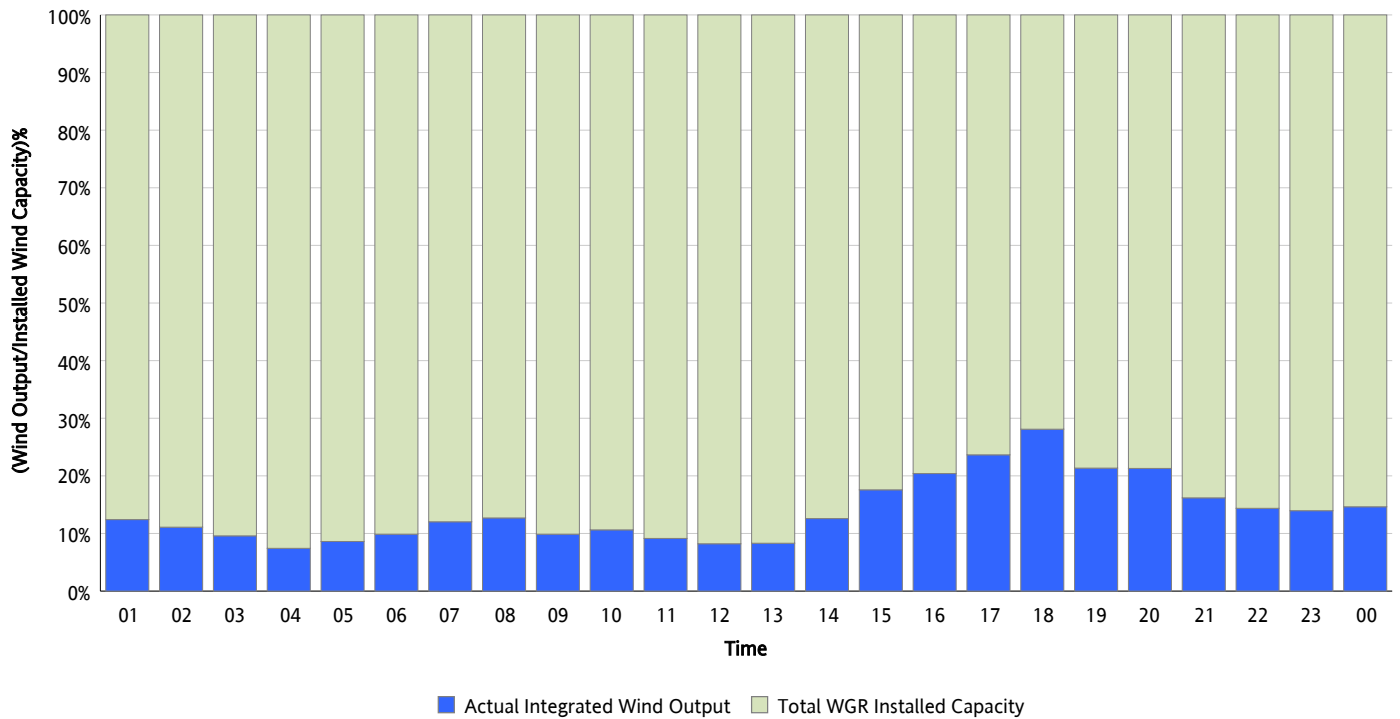
**Hourly Average Actual Load vs. Actual Wind Output**  
**07/10/2012**



*\* Wind Record and Wind Max represent instantaneous values and the rest of the values are integrated over the hour*

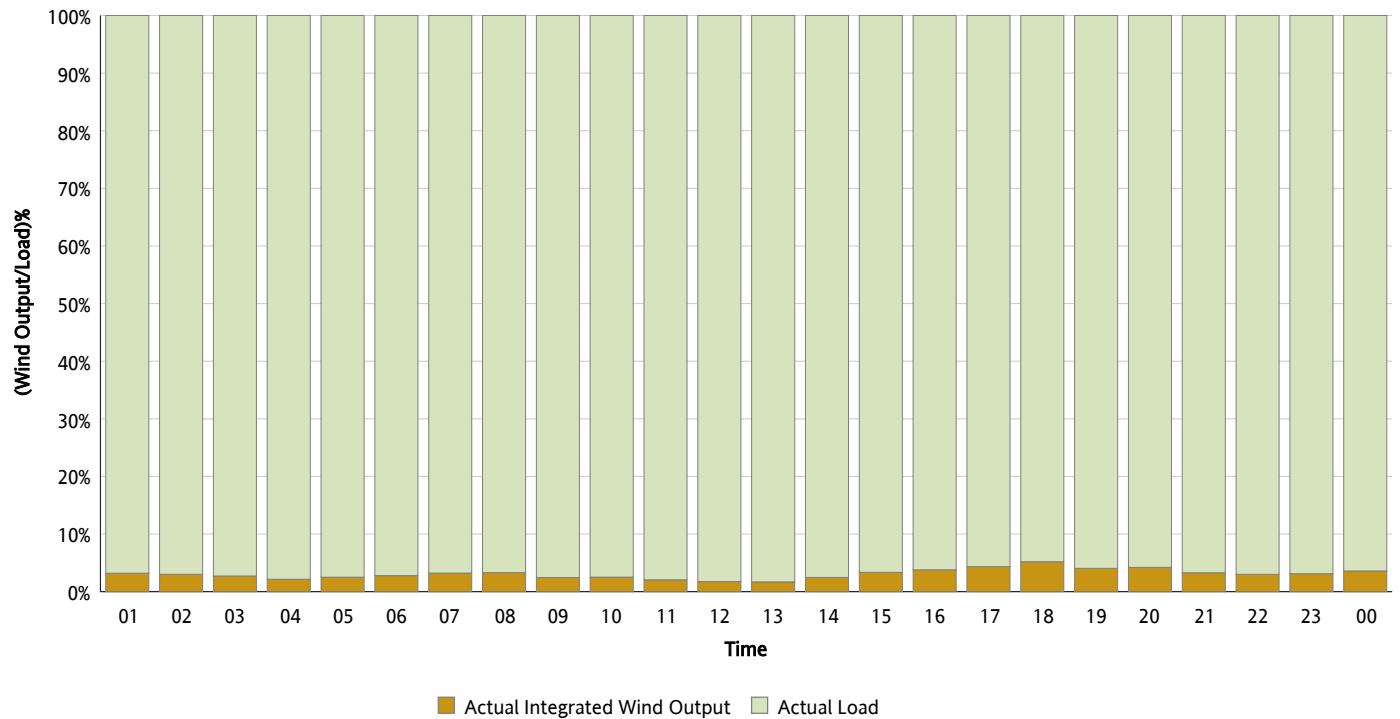
## Actual Wind Output as a Percentage of the Total Installed Wind Capacity

07/10/2012



## Actual Wind Output as a Percentage of the ERCOT Load

07/10/2012



## ERCOT Load vs. Actual Wind Output

07/03/2012 - 07/10/2012

